



Make plans now to join us for the last three parent support group meetings. These FREE events are led by an LCSW and held on Tuesdays from 4-5:30 pm in the Miriam School Library. *Miriam School students can join afternoon extended day on these days with no charge!*

MARCH 24TH | APRIL 21ST | MAY 12TH

Please RSVP to jruhland@miriamstl.org.

We hope to see you there!

March Dates to Know

Wednesday, March 4 at 12:00 pm

Early Dismissal

No lunch at school; No PM extended day

Thursday, March 5 at 6:00 pm

Free Parent Financial Planning Seminar

Bhavik Patel, Families at Ease

Please RSVP to jruhland@miriamstl.org

Friday, March 6

Parent Assoc. Meeting & Coffee at 8:30 am

Pizza Friday

Monday, March 16 – Friday, March 20

Spring Break

No Student Attendance

Tuesday, March 24 at 4:00 pm

Parent Support Group

Please RSVP to jruhland@miriamstl.org



FREE PARENT SEMINAR

Bhavik Patel, *Families at Ease*

Thursday, March 5

6:00 pm

Miriam School

501 Bacon Avenue | 63119



Join Bhavik Patel, Chairman and Founder of Families at Ease—a local not-for-profit focused on delivering information about programs, services and resources available for special needs children and their families—for this free evening seminar for parents.

Mr. Patel will educate the Miriam community parents on how to plan ahead for their children's future, discussing public benefits available to our children, how to plan for guardianship and planning and trusts.

Please RSVP to jruhland@miriamstl.org

Sponsored by Miriam School Parent Association

miriam
Founded in 1910



SAVE THE DATE

Miriam School

ARTS FESTIVAL

and

**Summer Reading
Kickoff and Book Fair**

Friday, May 8, 2020

1:45 p.m. - 3:30 p.m.

Miriam School Gym

**Help us celebrate the students
and their talents!**



2020 Summer **FUNDAMENTALS** at MIRIAM

ACADEMIC CAMPS | SOCIAL/EMOTIONAL SKILLS CAMPS | THERAPY CAMPS
For Students Entering Grades K – 12



Empowering Unique Learners

miriamstl.org • 314.961.1500

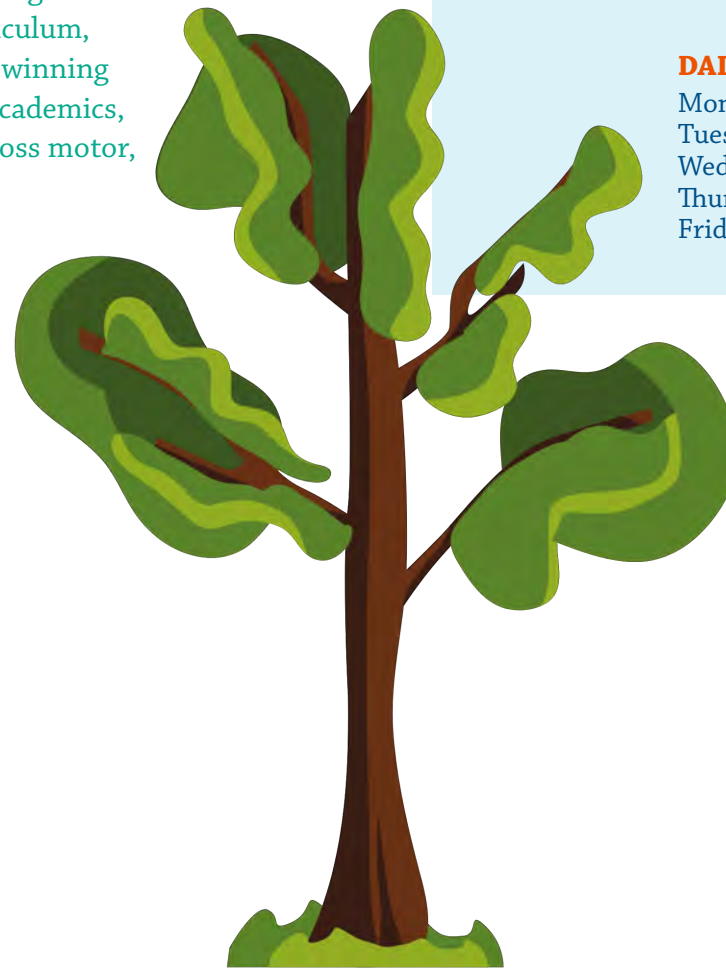
TAKE A PEEK

Pull back the massive tree canopy and experience the wonders of an exotic jungle ecosystem as it unfolds before your eyes. Discover many mysterious animals, birds, bugs and plants through a science, technology, engineering, art, and music-inspired safari trip.

Morning, afternoon and full-day sessions, **PLUS** after camp care is available!

Miriam's specialty camps are perfect for individuals entering grades K-12 who need a boost in fundamentals during the summer months. Small groups, a customized curriculum, and experienced certified/licensed staff make for a winning combination. Campers will be able to strengthen academics, build social skills, and improve sensory, fine and gross motor, or emotional development.

- Session 1 → June 15-26
- Session 2 → July 6 - 17
- Session 3 → July 20-31



MORNING CAMP*

Monday – Friday
8:00 – 11:00 am



AFTERNOON CAMP*

Monday – Friday
Noon – 3:00 pm



FULL-DAY CAMP

Monday – Friday
8:00 am – 3:00 pm

*\$200 discount when combining a half-day morning and half-day afternoon camp in the same session (excludes the full-day academic enrichment camps). Free supervision during the 11:00am-noon lunch time. Children must bring a lunch.

AFTER CAMP CARE → Monday-Friday 3:00-5:00 pm
(Cannot be prorated for missed days or partial attendance)

→ \$225 per session

DAILY THEMES

- Mondays Games
- Tuesdays Creative Art
- Wednesdays Team Activities
- Thursdays Movies
- Fridays Building with Legos





ELEMENTARY AND MIDDLE SCHOOL CAMPS

Entering Grades K-8

ACADEMIC CAMPS

Full-Day

Academic Enrichment Camps infuse reading, writing and math into small theme-related groups in the morning and offer fun, S.T.E.A.M-inspired jungle activities in the afternoon (8:1 ratio). Multi-sensory approaches are used to ensure all students participate.

Into the Wild

Join our safari adventure as we take an expedition through the rainforest. Explore the habitat of local animals, and if you're lucky, you may even have an up-close encounter.

Safari Adventure

Reserve a front row seat on the safari adventure bus, and experience firsthand Africa's spectacular culture, food, music, local wildlife and ecosystem.

Half-Day

Academic Bootcamp

Explore what's beneath the tree canopy through reading, writing, and math. Travelers will experience individualized support, small group instruction (6:2 ratio), a customized learning program and 30 minutes of daily 1:1 tutoring using research-based programs.

Reading Skills Camp

Learn to navigate the treacherous, and often difficult, jungle pathway of phonics, reading fluency and/or comprehension mastery. In addition to group instruction, each participant will receive 30 minutes of daily 1:1 tutoring using research-based programs. (6:2 ratio)

Writing Skills Camp

Take the once-in-a-lifetime trip through the Amazon and write about your amazing experiences. Certified "guides" help explorers strengthen printing/writing/typing and fine and gross motor skills, and improve written language abilities in a small group setting. (6:1 ratio)

SOCIAL AND EMOTIONAL SKILLS CAMPS



Half-Day

Monkeying Around

Try “bokdrol spoeg” (African sport of spitting) and other fun games and non-competitive sports with the other primates in the camp. “Expedition guides” will teach the basic nuances of social communication and explorers will put their new skills to use during activities. (10:1 ratio)

Asian Elephant Stomp

Stampede like an elephant through non-competitive sports that are popular in the Asian rainforests. The “lead pachyderm” provides direct social skills instruction so that the “herd” can practice ways to work as a team. (10:1 ratio)

Chilling Under the Canopy

Relax. Take a calm safari ride though Africa. Travelers who are shy or anxious will practice techniques to decrease anxiety so they can feel comfortable making friends. (6:1 ratio)

Making & Keeping Friends in the Congo

Make new friends during your excursion into the Congo rainforest and learn new ways to overcome many social dangers that may arise during the trip. (6:1 ratio)

THERAPY CAMPS

Half-Day

Swinging Through the Trees (Occupational Therapy)

Jump from tree to tree with baboons on your multi-sensory jungle trip. Fine and gross motor skills and sensory strategies will be emphasized in this swinging jungle camp. (6:1 ratio)

The Watering Hole (Social Language and Music Therapy)

Hang out with exotic animals at the popular watering hole. Be inspired to write, produce, and perform a musical skit to keep these animals at bay. (6:1 ratio)

HIGH SCHOOL CAMPS

Entering Grades 9-12



Half-Day

Academic Boost

Boost reading and writing skills while getting ready for the new school year! Supportive, small group instruction (6:1 ratio) helps teens brush up on academic skills through direct instruction and S.T.E.A.M-inspired, project-based learning.

The Social Teenager

Learn the best way to be a social teenager through group discussion, social skills building, and fun S.T.E.A.M-inspired jungle activities. (10:1 ratio)

HOW TO APPLY

Miriam Learning Center camps serve children of all abilities who can be successful within our staff ratios and our level of expertise. Children must be able to independently participate in a camp within the designated camper to staff ratios. Campers must be independent with activities of daily living, free of toileting accidents, and should be able to verbally communicate at the sentence level.

First-time campers, please visit www.miriamstl.org, click on the Learning Center tab and complete a summer camp application. New campers MUST provide evaluation reports and IEPs (if they have one) at the time of the application. Once we have received all of the documents, camp staff will contact you. All new campers will meet with camp staff for approximately 20 minutes prior to acceptance.

Returning campers or current Miriam School/Academy students, please call Gail Porter at 314-961-1500 or email gporter@miriamstl.org to receive the registration link. Please indicate your camp selection(s) at the time of contact.

PAYMENT

A \$250 deposit per camp is due when a child is accepted to camp. A \$50 deposit is required for each session of After Camp Care. Deposits are non-refundable after April 30, 2020. All camps must be paid in full by May 1, 2020 to secure a camper's spot. Those not paid in full may forfeit their child's camp placement. Due to small camp ratios, switching camps or sessions will not be available after April 30. Additionally, no refunds will be available after April 30. Limited scholarships are available on a first-come first-served basis for those who qualify.

Call 314.961.1500 with any questions or to apply today!

CAMP CALENDAR

SESSION	MORNING CAMPS* 8:00 – 11:00 am	AFTERNOON CAMPS* 12:00 – 3:00 pm	FULL-DAY CAMP 8:00 am – 3:00 pm
SESSION 1 June 15-26	Academic Bootcamp, \$1,200 Swinging Through the Trees, Occupational Therapy Camp, \$1,000	Writing Skills Camp, \$1,000 Monkeying Around, Social Skills and Sports Camp, \$1,000	Into the Wild, Academic Enrichment Camp, \$1,450
SESSION 2 July 6-17	Academic Bootcamp, \$1,200 Making and Keeping Friends in the Congo, Social Skills Camp, \$1,000	Reading Skills Camp, \$1,200 Chilling Under the Canopy, Social/Emotional Skills Camp, \$1,000	Safari Adventure, Academic Enrichment Camp, \$1,450
SESSION 3 July 20-31	Academic Bootcamp, \$1,200 Asian Elephant Stomp, Social Skills in Sports Camp, \$1,000	The Watering Hole, Social Language and Music Therapy Camp, \$1,000 Writing Skills Camp, \$1,000	

*Or Combine a morning ½ day camp and afternoon ½ day camp in the same session for a full-day camp experience and you receive a \$200 discount (excludes our full day camps).

Other summer services available for ages 3-25:
Call 314 961-1500 to schedule

- ➔ Individual tutoring by appointment
- ➔ Music lessons or therapy
- ➔ Speech/language therapy and evaluations
- ➔ Occupational therapy and evaluations
- ➔ Psychoeducational evaluations
- ➔ Psychosocial evaluations
- ➔ Young Adult Services (YAS)
- ➔ Counseling
- ➔ Functional Behavior Assessments (FBA)
- ➔ Behavior support within the home

HIGH SCHOOL MORNING*

Session 3 : 8:00 – 11:00 am
High School Academic Boost, \$1,000

HIGH SCHOOL AFTERNOON*

Session 3 : 12:00 – 3:00 pm
High School The Social Teenager, \$1,000